



Graduate as a **INSA de Lyon**
highly qualified engineer

from a University
of Science and
Technology of
European size

INSTITUT NATIONAL DES SCIENCES APPLIQUÉES DE LYON.

<http://www.insa-lyon.fr>





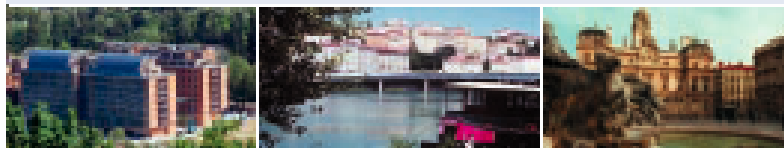
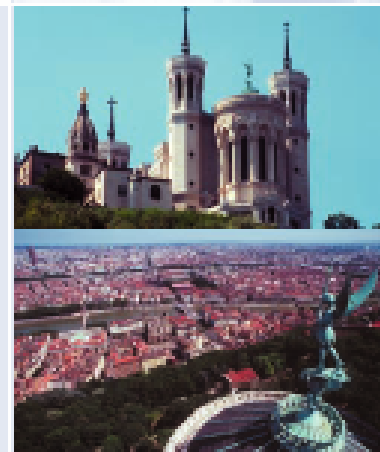
City of Lyon

A hub of communication in the heart of Europe



Population

- **2 million** inhabitant
(2nd largest French city)
- **100 000** students including
- **8 000** overseas students





City of Lyon

A major European city combining a rich cultural life with a highly diversified industrial environment.



In 1998 the historical site of Lyon was given a World Heritage classification by UNESCO.





INSA-Lyon : facts

One of the France's largest university of Science and Technology :

- **4 900** students
- **850** graduate engineers per year
- **1 200** permanent staff
(~480 academic staff)



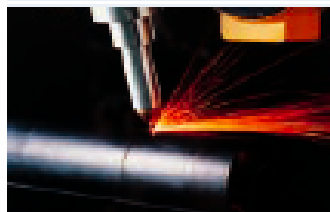
A major research centre :

- **29** research laboratories
- **1050** industrial contracts representing annual turnover of 15 millions Euros
- **24** PhD Fields
- ~ **125** PhD/year



2 subsidiaries :

- **INSAVALOR**
Research valuing
- **INSACAST**
Continuous education



International :

- Exchange programs and in-company industrial training : 65% of students
- European section : **EURINSA**
- Asian section : **ASINSA**
- Latin-American section : **AMERINSA**



European Union SOCRATES

- **Germany :**
Aachen, Karlsruhe, Berlin, Cottbus, Dortmund,
Dresde, Stuttgart, Bochum.
- **Belgium :** Mons, FUCAMons, Vrije Bruxelles.
- **Austria :** T.U. Wien.
- **Denmark :** Lyngby, Aalborg.
- **Spain :**
Jaume I, U.P.Madrid, U.P.Barcelona,
Sevilla, UP Valencia, Pais Basco, Santander,
Zaragoza.
- **Finland :**
Lapeeranta UT, Tampere UT, Turku,
Joensuu, Univ. Of Helsinki, Jyväskylä,
Helsinki UT.
- **United Kingdom :**
Birmingham, Leeds, Bristol, Bath, Oxford,
Nottingham, Sheffield, Brunel, Heriot Watt.
- **Hungary :** TU Budapest.
- **Ireland :**
Trinity College Dublin,
Dublin City University,
Limerick.



INSA-Lyon: a school of excellence

In the year 2001-2003, INSA's outstanding level of performance was acknowledged in 4 prestigious publications:

- ***Voted top 5-year French engineering school***
by "L'Etudiant" magazine
- ***Ranked in the top 10 French engineering schools***
by "Le Nouvel Economiste" magazine
- ***Ranked 2nd among French engineering schools in terms of Research and Development turnover***
(more than 1,050 industrial contracts with a total turnover of more than 15.3 Million Euros) by the monthly "Industries et Technologies" magazine
- ***Ranked 4th among Europe's non-university institutions for the number of Socrates exchange programme***
by the National Socrates-Leonardo agency.



INSA-Lyon : curriculum

A five-year curriculum for training highly-qualified graduate engineers.

Engineering degree accredited by the French ministry of equivalent level to a Master's of Science.



Ten specialised departments :

- **Biochemistry**
- **Computer Engineering and IT**
- **Civil Engineering and Urban Development**
- **Electrical Engineering**
- **Energetics and Environmental Engineering**
- **Industrial Engineering**
- **Mechanical Engineering / Manufacturing**
- **Mechanical Engineering / Development**
- **Material Science Engineering**
- **Telecommunication**



Mechanical Engineering/ Manufacturing

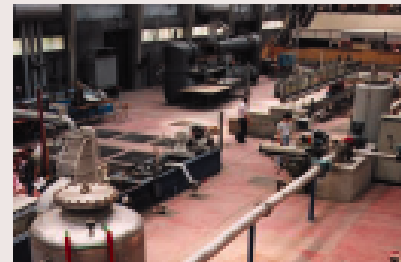
151 graduates per year

General mechanical engineers competent for industrial activities where mechanical knowledge is necessary :

- mechanical construction, metallic construction, the automobile industry, aeronautics, naval construction, and many others.

Syllabus

- Kinematics & dynamics
- Locomotion
- Solid & fluid mechanics
- Structure, vibration & acoustic mechanics
- CADF & manufacturing
- Automatics & Robotics
- Materials, Controlling
- Manufacturing and industrial robotics
- Project management, management
- Quality management
- Communication



Director of the Department - Prof. Jean-Claude BOYER

Phone: +33 (0)4 72 43 82 01 - Facsimile: +33 (0)4 72 43 85 15
gmc@insa-lyon.fr



UNIVERSITÄT
KARLSRUHE (TH)

KARLINSA

Doppeldiplom-Studiengang Maschinenbau

Double Diplôme en Sciences de l'Ingénieur

Etudiants de Lyon:

1^{er} cycle à l'INSA

Studierende aus Karlsruhe:

Vordiplom an Uni Karlsruhe

Fine gemeinsame Studierenden-Gruppe im Hauptdiplom

Un groupe commun d'étudiants en 2^{ème} cycle

Semestres 5,6,7: INSA Lyon

Pflichtfachvorlesungen und Studienarbeit

Cours obligatoires et un projet individuel

Semester 8,9,10: Universität Karlsruhe (TH)

Wahl-/Hauptfächer und Diplomarbeit

Cours à options et projet de fin d'études



Zwei Diplome – Deux Diplômes



INFORMATION

INSA Lyon:

A. Sandel
Amaud.Sandel@insa-lyon.fr
Tél. +33 4 72 43 64 56

Universität Karlsruhe:

M. Gabi
marlin.gabi@mach.uka.de
Tel. +49 721 608 2350

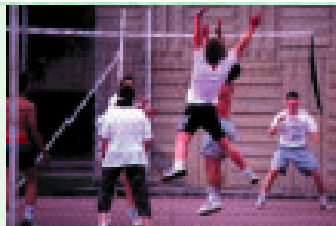


Campus life

A rich cultural and sports environment

- 90 clubs and associations
- high level sports facilities (students participation in the Olympic Games in Seoul, Barcelona, Atlanta, Sydney)

Lounges, health centre, documentation centre, library, Internet access...



Student Halls and restaurants on campus

Ski
Ski





UNIVERSITÄT KARLSRUHE



Deutsch-Französischer Ingenieurstudiengang Maschinenbau (Defis)

Programmbeauftragte:

Prof. Dr.-Ing. W. Seemann
Prof. Dr.-Ing. W. Wedig

Mitarbeiter:

Isabelle Hornik (Tel: 608-2894)
Martin Cichon (Tel: 608-6146)

Geschäftsstelle:

Kollegiengebäude Maschinenbau (Geb. 10.23)
7. OG., Zi.706
mit der Straßenbahn zu erreichen über Haltestelle Kronenplatz/Berliner Platz

Tel: +49/721/608-2894
Fax: +49/721/608-6825
E-mail: info@defis.uni-karlsruhe.de

Sprechstunden:
täglich 9.30 - 11.30 Uhr
oder nach Vereinbarung